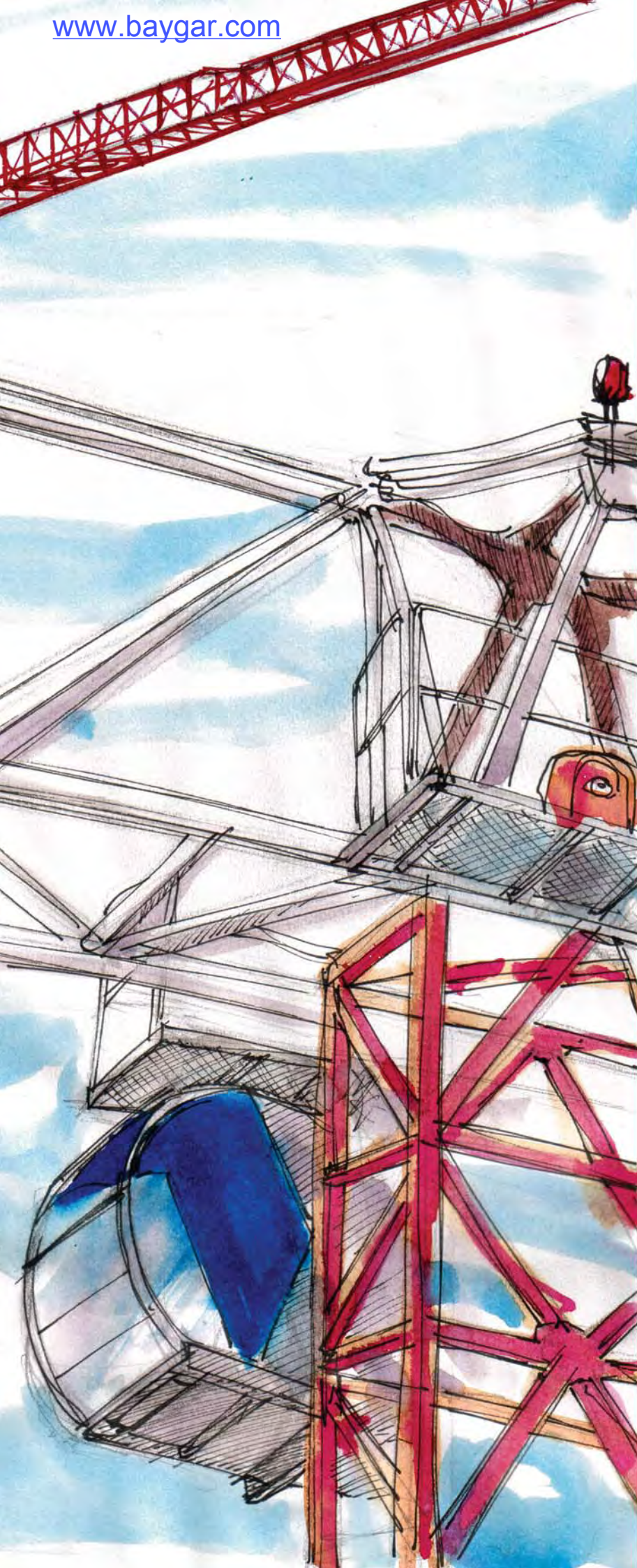


SAEZ

CRANES



TLS 75 16T



TLS 75

16T S2322



DIN 15018

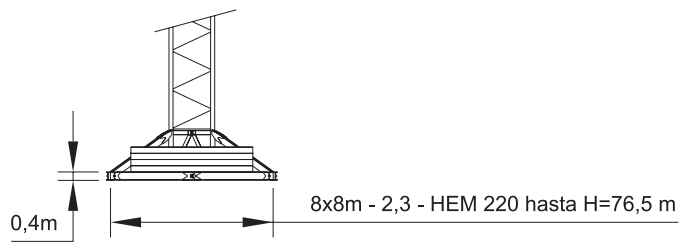
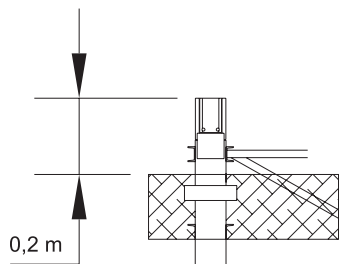
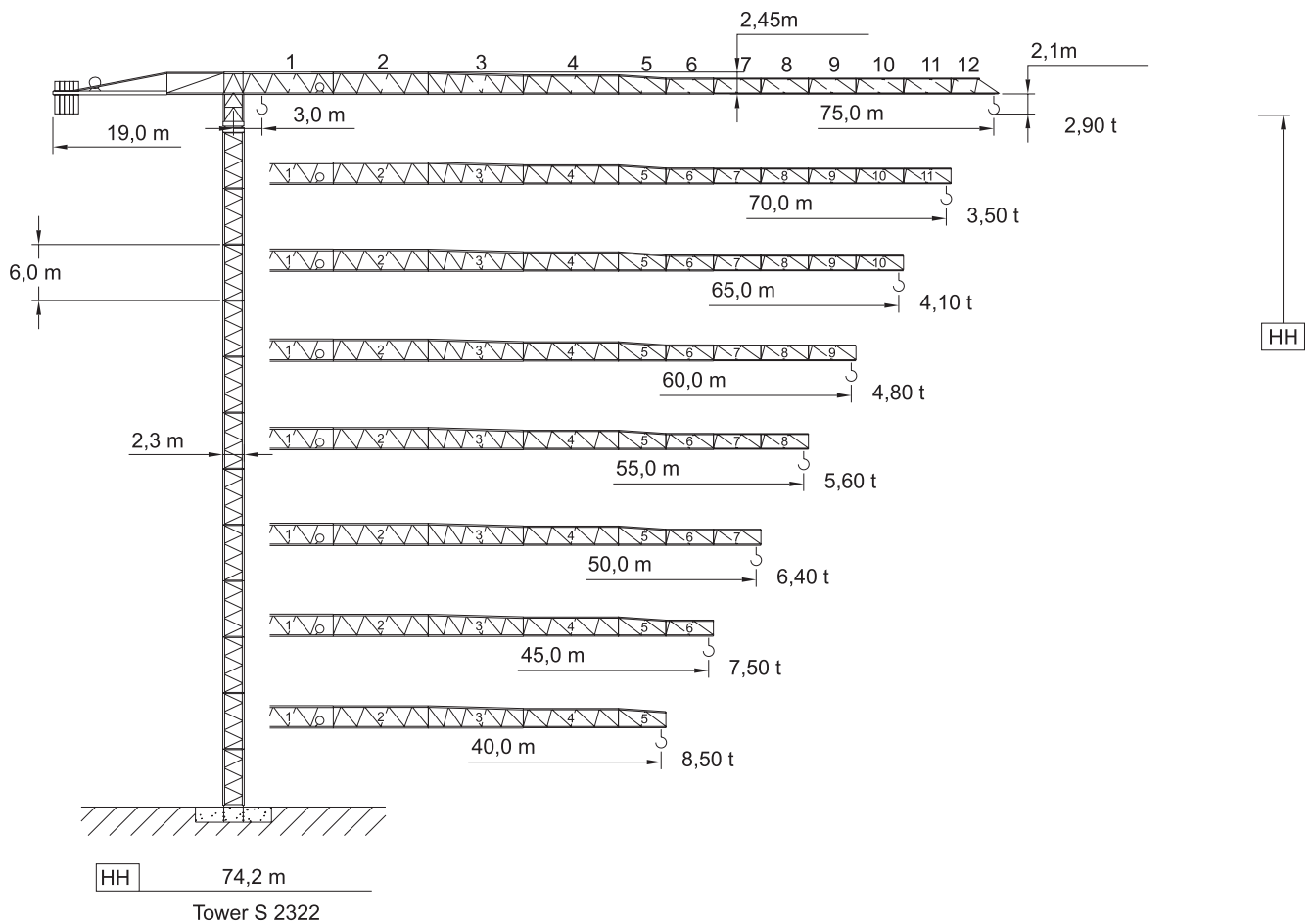


Viento max. fuerza de servicio 150km/h
Maximun wind speed out of service 150 km/h
Maximale windstärke, ohne Betrieb 150 km/h
Vent maximum, hors service 150 km/h
Vento max, fuori di servizio 150 km/h



UNE 58-101-92 FEM 1001-87
According to EC 98/37 instruction

Windzone A-B / DIN 15019
Viento max. fuerza de servicio 150 km/h-93 mph
Maximun wind speed out of service 150 km/h-93 mph
Maximale windstärke, ohne Betrieb 150 km/h-93 mph
Vent maximum, hors service 150 km/h-93 mph
Vento max, fuori di servizio 150 km/h-93 mph



Bloque de contrapeso
Counterweight blocks
Gegengewichtsblöcke
Bloc de contrepoid
Blocco di contrappeso

	75 m		70 m		65 m		60 m	
	A	B	A	B	A	B	A	B
	8	-	7	1	6	2	7	-
	28000 Kg		27000 Kg		26000 Kg		24500 Kg	

	55 m		50 m		45 m		40 m	
	A	B	A	B	A	B	A	B
	6	1	6	-	4	2	5	-
	23500 Kg		21000 Kg		19000 Kg		17500 Kg	

75 m


15	20	25	30	32	35	40	45	50	55	60	65	70	75
8000	8000	8000	8000	8000	7190	6180	5390	4760	4250	3830	3470	3160	2900
15	17	20	25	30	35	40	45	50	55	60	65	70	75
16000	16000	13460	10410	8420	7010	5970	5160	4510	3990	3550	3190	2870	2600

m
Kg
m
Kg



70 m


15	20	25	30	34	35	40	45	50	55	60	65	70
8000	8000	8000	8000	8000	7820	6730	5890	5210	4670	4210	3830	3500
15	18	20	25	30	35	40	45	50	55	60	65	70
16000	16000	14380	11170	9060	7580	6470	5610	4930	4380	3920	3530	3200


m
Kg
m
Kg



65 m


15	20	25	30	35	36	40	45	50	55	60	65
8000	8000	8000	8000	8000	8000	7140	6260	5550	4980	4500	4100
15	19	20	25	30	35	40	45	50	55	60	65
16000	16000	15390	11980	9750	8180	7010	6100	5380	4800	4310	3900

m
Kg
m
Kg



60 m


15	20	25	30	35	36	40	45	50	55	60
8000	8000	8000	8000	8000	8000	7590	6660	5910	5300	4800
15	20	20,1	25	30	35	40	45	50	55	60
16000	16000	16000	12550	10240	8610	7390	6460	5710	5100	4600

m
Kg
m
Kg



55 m


15	20	25	30	35	40	45	50	55	
8000	8000	8000	8000	8000	8000	7020	6240	5600	
15	20	21	25	30	35	40	45	50	55
16000	16000	16000	13210	10790	9080	7800	6820	6040	5400


m
Kg
m
Kg



50 m


15	20	25	30	35	40	40,9	45	50
8000	8000	8000	8000	8000	8000	8000	7200	6400
15	20	21,5	25	30	35	40	45	50
16000	16000	16000	13540	11060	9310	8010	7000	6200

m
Kg
m
Kg



45 m


15	20	25	30	35	40	42,5	45
8000	8000	8000	8000	8000	8000	8000	7500
15	20	22,3	25	30	35	40	45
16000	16000	16000	14090	11520	9700	8340	7300

m
Kg
m
Kg



40 m


15	20	25	30	35	40	
8000	8000	8000	8000	8000	8000	
15	20	22,6	25	30	35	40
16000	16000	16000	14340	11720	9800	8500

m
Kg
m
Kg



Curvas de cargas
Load diagrams
Lastkurven
Courbes de charges
Curve di carico

Mecanismos, Mechanisms, Antriebe, Mécanismes, Meccanismi

75 Hp (55Kw) H.B.G 300 m S/R Ø16
2000/14/CE

	 Lebus 720 m	m/min	30	39	56	83	15	20	28	42
		Kg	8000	6000	4000	2400	16000	12000	8000	4800
		lbs	17640	13230	8820	5292	35280	26460	17640	10584
		Kw	55	55	55	55	55	55	55	55
		m/min	0 / 90				0 / 90			
		Kw	11				11			
		v.	0,85 min ⁻¹				0,85 min ⁻¹			
		Nm	4 x 80				4 x 80			
		m/min (fpm)	25 (82)				25 (82)			
		Kw	4 x 7,5				4 x 7,5			

- ⬆ Elevación / Hoisting / Heben / Levage / Sollevamento
- Distribución / Trolleying / Katzfahren / Distribution / Dtribuzione
- ⦿ Orientación / Slewing / Schwenken / Orientation / Rotazione
- ▬ Traslacion / Travelling / Schienenfahren / Translation / Traslazione
- ▬ Cable / Rope / Seil / Câble / Fune

	400 V 50 Hz	150 kVA
--	----------------	---------

	460 V 60 Hz	opcional
--	----------------	----------

100 Hp (75Kw) H.B.G 500 m /R Ø16
2000/14/CE

	 Lebus 1120 m	m/min	40	52	74	110	20	26	37	55
		Kg	8000	6000	4000	2400	16000	12000	8000	4800
		Kw	110	110	110	110	110	110	110	110

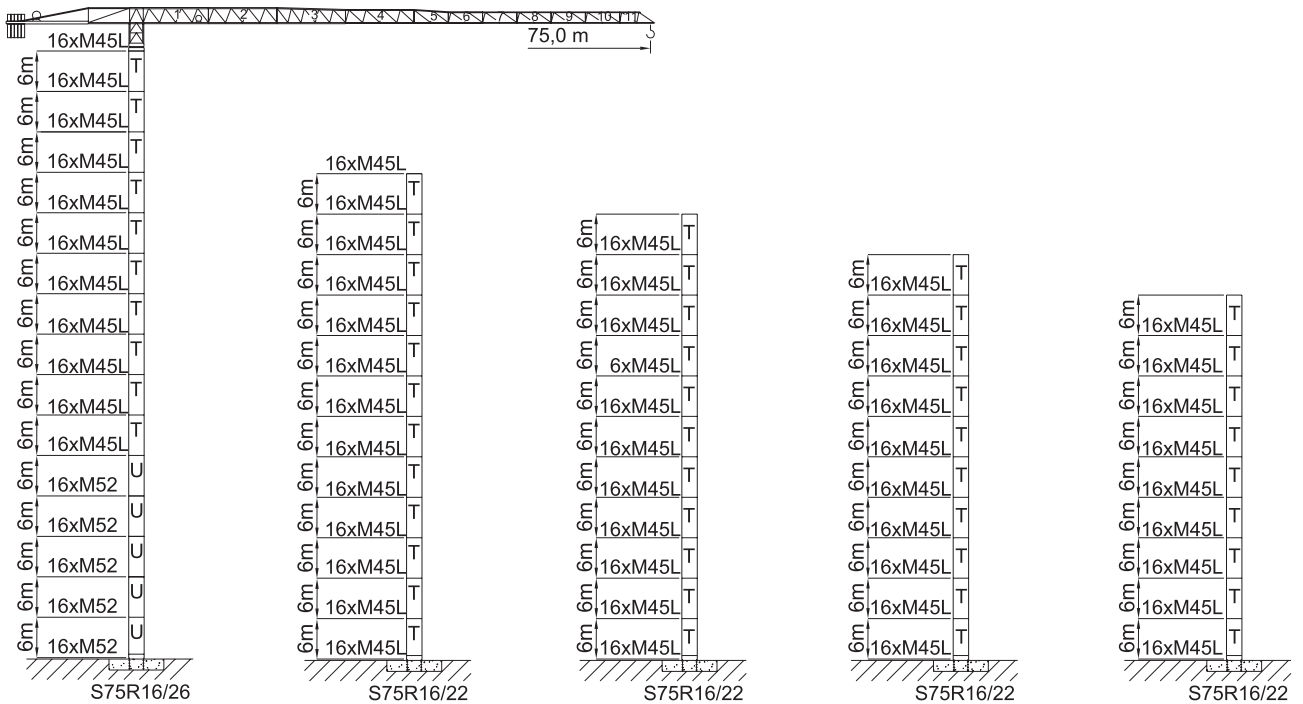
- ⬆ Elevación / Hoisting / Heben / Levage / Sollevamento
- ▬ Cable / Rope / Seil / Câble / Fune

	400 V 50 Hz	170 kVA
--	----------------	---------

	460 V 60 Hz	opcional
--	----------------	----------

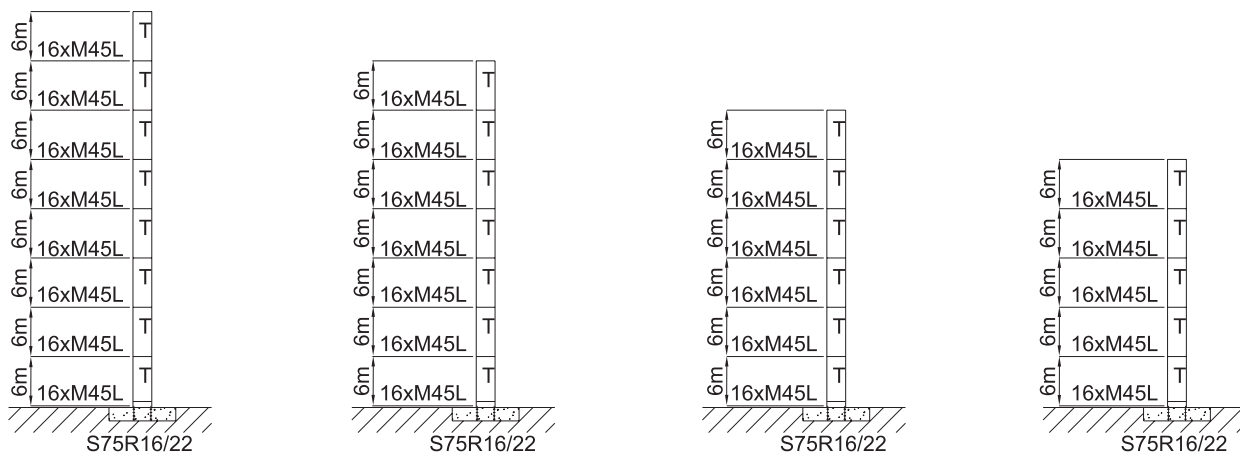
Windzone A-B / DIN 15019

Mástil / Reacciones, Masts / Reactions, Maste / Eckdrücke, Mat / Réactions, Torre / Reazioni

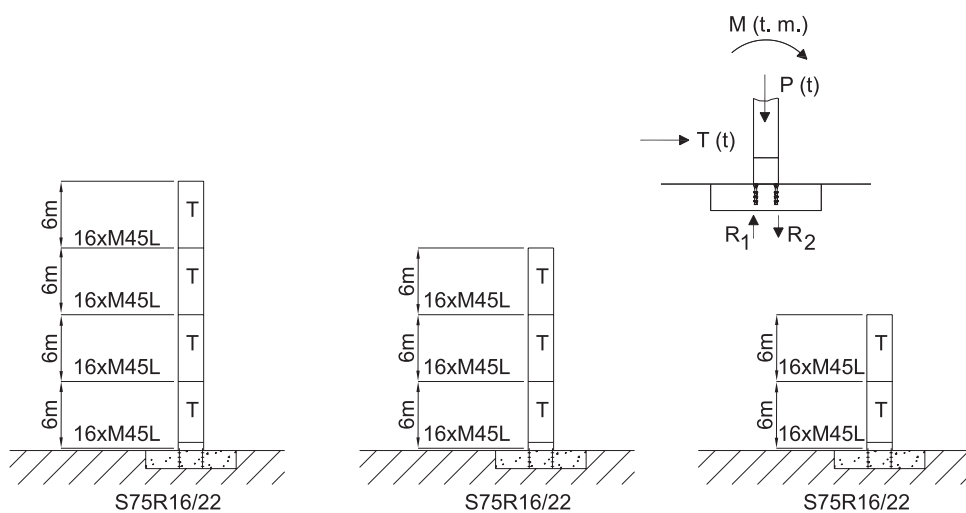


H [m]	92,2	74,2	68,2	62,2	56,2
M [tm]	1699	1193	1044	912	794
T [t]	22,6	18,1	16,5	15,3	14,1
P [t]	161,4	138,1	126,1	120,8	115,6
R ₁ [t]	545,8	377,0	328,4	284,2	245,0
R ₂ [t]	626,4	446,0	391,4	344,5	302,8

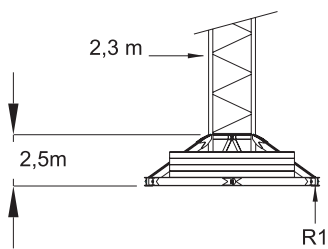
Windzone A-B / DIN 15019
 Mástil / Reacciones
 Masts / Reactions
 Maste / Eckdrücke
 Mat / Réactions
 Torre / Reazioni



H	[m]	50,2	44,2	38,2	32,2
M	[tm]	690	597	515	443
T	[t]	12,9	11,7	10,5	9,2
P	[t]	110,3	105,1	99,9	94,6
R1	[t]	210,2	179,5	152,5	129,0
R2	[t]	265,3	232,0	202,4	176,2



H	[m]	26,2	20,2	14,2
M	[tm]	381	327,3	304
T	[t]	7,9	6,7	2,8
P	[t]	86,0	80,7	89,2
R 1	[t]	109,7	92,7	82,4
R 2	[t]	152,7	133,0	127,0



	R1	61,6 t	64,9 t	68,5 t	72,4 t	76,6 t	83,5 t
	H	16,5 m	22,5 m	28,5 m	34,5 m	40,5 m	46,5 m
8,0 x 8,0 m-2,3 16/22 S2322	Z	30 t	30 t	30 t	30 t	30 t	40 t

	R1	91,2 t	108,0 t	133,0 t	161,3 t	192,9 t
	H	52,5 m	58,5 m	64,5 m	70,5 m	76,5 m
8,0 x 8,0 m-2,3 16/22 S2322	Z	50 t	70 t	90 t	110 t	150 t

		L	W	H	Peso		
Bloque de contrapeso Counterweight blocks Gegengewichtsblöcke Bloc de contrepoid Blocco di contrappeso		1	2,4 m	1,55 m	0,29 m	2500 kg	
		2	3,4 m	1,55 m	0,29 m	3500 kg	
Pluma tramo primero Jib heel section Ausleger Anlenkstück Pied de fleche Settore articolato di braccio	N°1 						
	N° 2, N° 3 	1	11,3 m	1,65 m	2,45 m	6600 kg	
		2	10,45 m	1,65 m	2,45 m	3670 kg	
		3	10,4 m	1,65 m	2,42 m	2730 kg	
		4	10,35 m	1,65 m	2,37 m	2200 kg	
	N°4 						
	Elemento intermedio de pluma Intermediate jib section Ausleger Zwischenstück Elément interm. de fleche Spezzone di braccio	N° 5, N° 6 					
		N° 7 	5	5,33 m	1,65 m	2,08 m	1030 kg
			6	5,29 m	1,65 m	2,07 m	870 kg
7			5,25 m	1,65 m	2,02 m	760 kg	
8			5,25 m	1,65 m	1,67 m	690 kg	
9			5,21 m	1,65 m	1,67 m	570 kg	
10			5,18 m	1,65 m	1,65 m	440 kg	
N°8, N°9, N°10, N°11 		11	5,15 m	1,65 m	1,65 m	340 kg	
		12	5,0 m	1,65 m	1,60 m	230 kg	
N°12 							

L W H Peso/Weight

Contrapluma
Counter-jib
Gegenausleger
Contre-fleche
Controbraccio

	L	W	H	Peso/Weight	
N° 1					
N° 2					
	1	11,94 m	1,76 m	0,70 m	3770 kg
	2	5,58 m	3,16 m	0,57 m	2560 kg
	3-4	6,4 m	0,61 m		205 kg
	5	3,16 m	0,61 m		110 kg
N° 3					
N° 4					
N° 5					

Base 8,0 x 8,0 m
Base 8,0 x 8,0 m
Unterwagen 8,0 x 8,0 m
Châsis 8,0 x 8,0 m
Carro base 8,0 x 8,0 m

	L	W	H	Peso/Weight
	8,4 m	8,4 m	2,5 m	13010 kg

Elemento de empotre
Foundation anchor
Fundamentanker
Élément de scellement
El annegare

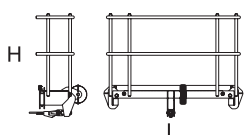
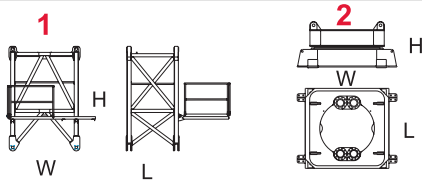
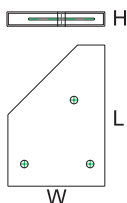
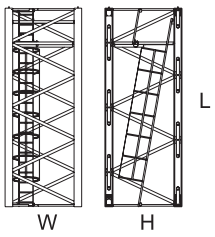
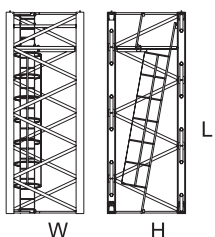
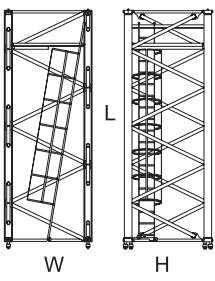

	L	W	H	Peso/Weight
S75R 8/20	2,5 m	2,5 m	1,62 m	1270 kg
S75R 16/22	0,5 m	0,5 m	2,5 m	2840 kg
S75R 16/26	0,5 m	0,5 m	2,5 m	3160 kg
S75R 24/26	0,5 m	0,5 m	2,5 m	3400 kg
Dima	2,31 m	2,34 m	0,8 m	1650 kg

Carro
Trolley/
laufkatze/
Chariot/
Carello

	L	W	H	Peso/Weight
	1,99 m	1,76 m	1,2 m	360 kg

Gancho
Lasthaken/
Crochet/
Gancio

	L	W	H	Peso/Weight
1	1,24 m	0,64 m	1,70 m	300 kg
2	0,6 m	0,17 m	0,86 m	250 kg

		L	W	H	Peso
Tramo final Jib end Auslegerende dernier troçon braccio finale		1,9 m	0,7 m	1,3 m	160 kg
Unidad de rotación rotation unit Zentral mast unité de rotation braccio finale		1 1,67 m 2 2,39 m	2,2 m 2,98 m	3,3 m 1,42 m	2100 kg 7455 kg
Bloque lastre de base Base ballast block Grundballastblöcke Bloc de test de base Blocco di zavorra alla base		3,0 m	2,08 m	0,3 m	3750 kg
Elemento de torre TL2322 (T) Tower section TL2322 Turmstück TL2322 Element de mât TL2322 Elemento di torre TL2322		6,0 m	2,29 m	2,28 m	4650 kg
Elemento de torre TL2326 (U) Tower section TL2326 Turmstück TL2326 Element de mât TL2326 Elemento di torre TL2326		6,0 m	2,34 m	2,32 m	6196 kg
Elemento de torre TL2420 (R) Tower section TL2420 Turmstück TL2420 Element de mât TL2420 Elemento di torre TL2420		5,9 m	2,34 m	2,32 m	4285 kg
Cabina y soporte / Cabin and support / Kabine und Plattform / Cabine et support / Cabina e supporto		3,05 m	1,60 m	2,35 m	630 kg

ESPECIFICACIONES SUJETAS A MODIFICACIONES SIN PREVIO AVISO.

Specifications subject to modification without notice.
 Obiges kann ohne berstaendigung geaendert werden.
 Specifications susceptibles de modification sans avis préalable.
 Specifiche suscettibili di variazioni senza preavviso.

DECLINAMOS TODA RESPONSABILIDAD DERIVADA DE LA INFORMACION PROPORCIONADA.

This information is supplied without liability.
 Sämtliche Angaben erfolgen ohne Gewähr.
 Ces renseignements sont sans garantie.
 Le indicazioni contenute si intendono salvo errori ed omissioni.